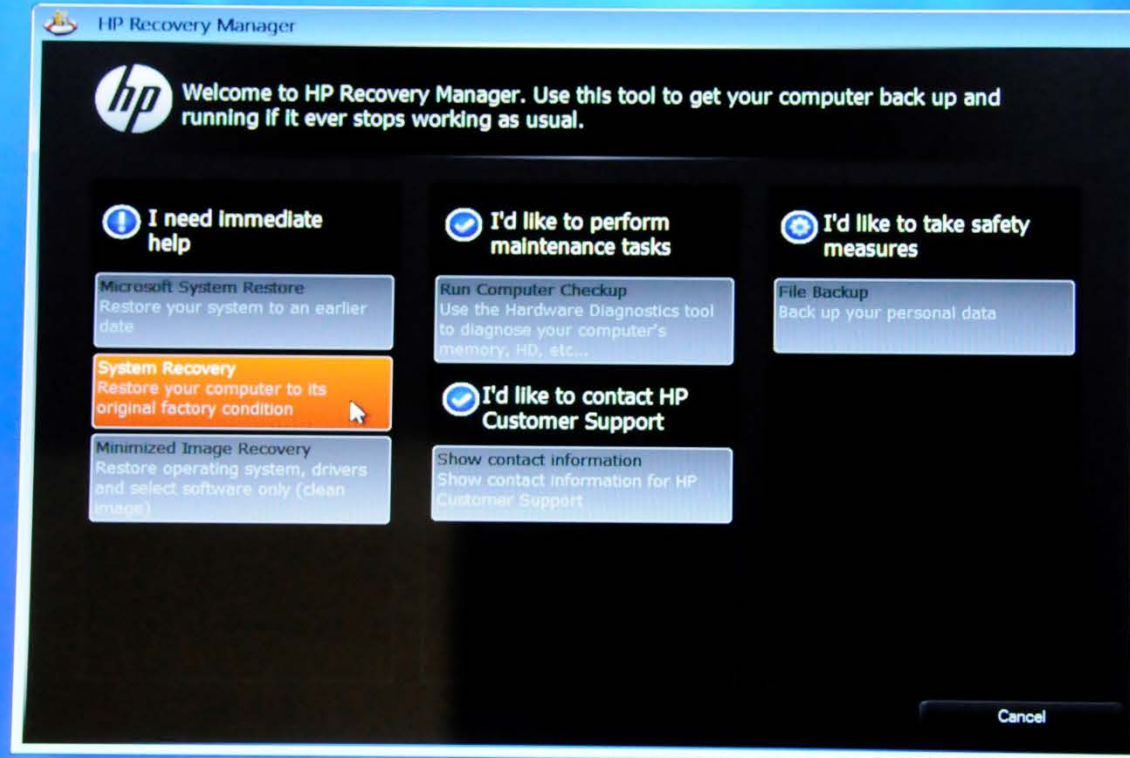


After pressing F11 key on keyboard – HP Recovery Manager starts





System Recovery

Restore your computer to its original factory condition

This process will reinstall the original factory image on the system partition but will not perform other hard drive changes. If you want to restore Recovery Partition as well - use Factory reset.

All user-created files and programs installed after purchase will be lost.

- Back up your files first (recommended)
- Recover without backing up your files

To continue, select an option and then click Next.

Back

Next

Cancel

HP Recovery Manager



System Recovery

Welcome to the HP Recovery Manager

Use this program to recover your computer to its original factory condition.

Please detach all external devices before you continue.
For additional information refer to your computer documentation.

To continue, click Next.

Back

Next

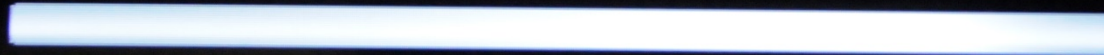
Cancel



Factory image restore

- ✔ Reformatting the Windows partition of your hard drive
- ✔ Copying files required to restore the hard drive
- ✔ Reinstalling original software

Progress: 0 %



Please wait...

Back

Next





HP Recovery Manager

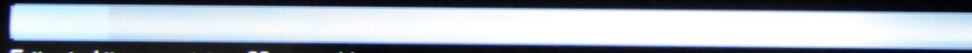


System Recovery

Factory image restore

- ✔ Reformatting the Windows partition of your hard drive
- ✔ Copying files required to restore the hard drive
- ✔ Reinstalling original software

Progress: 10 %



Estimated time remaining: 20 minute(s)

Please wait...

Back

Next

Cancel

After HP Recovery completes, first boot of computer shows:



Set Up Windows

Windows 7 Ultimate

Country or region:

Time and currency:

Keyboard layout:



Copyright © 2009 Microsoft Corporation. All rights reserved.

Next

Set Up Windows

Windows 7 Ultimate

Choose a user name for your account and name your computer to distinguish it on the network.

Type a user name (for example, John):

Type a computer name:



Copyright © 2009 Microsoft Corporation. All rights reserved.

Next

Set Up Windows

Review your time and date settings

Time zone:
(UTC-08:00) Pacific Time (US & Canada) ▾
 Automatically adjust clock for Daylight Saving Time

Date:

June, 2017						
Su	Mo	Tu	We	Th	Fr	Sa
28	29	30	31	1	2	3
4	5	6	7	8	9	10
11	12	13	14	15	16	17
18	19	20	21	22	23	24
25	26	27	28	29	30	1
2	3	4	5	6	7	8

Time:



2:05:25 PM

Next

Desktop after initial setup completes





Computer

Organize System properties Uninstall or change a program Map network drive Open Control Panel

Search Computer

- ★ Favorites
 - Desktop
 - Downloads
 - Recent Places
- Libraries
 - Documents
 - Music
 - Pictures
 - Videos
- Computer
- Network

Hard Disk Drives (2)

- Local Disk (C:) 648 GB free of 681 GB
- RECOVERY (D:) 1.82 GB free of 16.6 GB

Devices with Removable Storage (1)

- BD-ROM Drive (E:)

123-HP Workgroup: WORKGROUP Memory: 8.00 GB Processor: AMD A6-3400M APU wi...



Recycle Bin

Blio

eBay


HP Support Assistant

Play HP Games

Snafish

Date and Time

Date and Time | Additional Clocks | Internet Time



Date:
Wednesday, June 14, 2017

Time:
2:10:10 PM

[Change date and time...](#)

Time zone:
(UTC-08:00) Pacific Time (US & Canada)

[Change time zone...](#)

Daylight Saving Time ends on Sunday, November 05, 2017 at 2:00 AM. The clock is set to go back 1 hour at that time.

Notify me when the clock changes

[Get more time zone information online](#)
[How do I set the clock and time zone?](#)

OK Cancel Apply

Search Computer

or change a program | Map network drive | Open Control Panel

ives (2)

sk (C:)

free of 681 GB

RECOVERY (D:)

1.82 GB free of 16.6 GB

Removable Storage (1)

Drive (E)

123-HP Workgroup: WORKGROUP | Memory: 8.00 GB
Processor: AMD A6-3400M APU wi...

HP Connection Manager

Wi-Fi: Disconnected
LAN: Not connected

Taskbar icons: Windows Start, Internet Explorer, File Explorer, HP Support Assistant, Taskbar Search, Taskbar Notification Area

System tray: Volume, Network, Date and Time (2:10 PM 6/14/2017)